



Where to find out more

For information on tickets, services, timetables and route maps, or to request large print timetables, visit viclink.com.au or call **136 196**, 6am – 10pm, daily.

We welcome your feedback.
Visit viclink.com.au or call **136 196**.



Edenhope region

Your guide to public transport



MET1690_07/09



Viclink: Victoria's public transport operators working together.





Public transport information

To plan your trip from start to finish within Victoria, use the online journey planner at **viclink.com.au**

136 196 6am – 10pm daily

9619 2727 TTY

Local buses

Call Nortons Coaches
Or visit **viclink.com.au**

(08) 8762 2962 9am – 5pm Mon – Fri

V/Line trains and coaches

Call V/Line or visit **vline.com.au**

136 196 6am – 10pm daily

Community transport

Wimmera Transport Connections

5382 5607 9am – 5pm Mon – Fri



QUICK REFERENCE

Local buses

For local bus information call
Nortons Coaches

(08) 8762 2962

9am – 5pm Mon – Fri



THIS WAY →

Local buses

What services are available?

Nortons Coaches run an intertown service between Naracoorte and Horsham, stopping at Edenhope.

Where can I catch them?

The following page includes a map of the Naracoorte to Horsham service.

When do they run?

The service runs from Naracoorte to Horsham each weekday morning and from Horsham to Naracoorte each weekday afternoon. The following page includes the timetable for this service.

Timetable information is available from **viclink.com.au** or call **136 196**. For printed timetables call Nortons Coaches on **(08) 8762 2962** 9am – 5pm Mon – Fri.

What are the fares?

You can buy tickets on board buses. For more information, call Nortons Coaches on **(08) 8762 2962** 9am – 5pm Mon – Fri.



Naracoorte to Horsham



100609

For public transport information
call 136 196 (TTY) 9619 2727
or visit viclink.com.au

MAP NOT TO SCALE



Naracoorte to Horsham

| | Monday to Friday AM | |
|--------------------------------|------------------------|--|
| McRae St (Naracoorte SA) | 7.45 | |
| Post office (Hynam SA) | 7.55 | |
| Apsley Cafe (Apsley) | 8.40 | |
| Edenhope Newsagency (Edenhope) | 9.15 | |
| Depot (Goroke) | 9.55 | |
| Gymbowen Hotel (Gymbowen) | 10.15 | |
| Tooan Mitre Rd (Mitre) | 10.30 | |
| Mount Arapiles (Natimuk) | 10.35 | |
| Natimuk Chemist (Natimuk) | 10.40 | |
| Hughes Rd (Quantong) | 10.55 | |
| Roberts Av (Horsham) | 11.05 | |

Horsham to Naracoorte

| | Monday to Friday PM | |
|--------------------------------|------------------------|--|
| Roberts Av (Horsham) | 2.20 | |
| Hughes Rd (Quantong) | 2.35 | |
| Natimuk Chemist (Natimuk) | 2.45 | |
| Mount Arapiles (Natimuk) | 3.00 | |
| Tooan Mitre Rd (Mitre) | 3.05 | |
| Gymbowen Hotel (Gymbowen) | 3.20 | |
| Depot (Goroke) | 3.40 | |
| Edenhope Newsagency (Edenhope) | 4.20 | |
| Apsley Cafe (Apsley) | 4.40 | |
| Post office (Hynam SA) | 4.25 | |
| McRae St (Naracoorte SA) | 4.45 | |

This bus service is operated by Nortons Coaches (08) 8762 2962.
All information is correct at time of printing, July 2009.

LOCAL INTERTOWN BUSES



V/Line services

For information on V/Line services visit **vline.com.au** or call

136 196
6am – 10pm daily



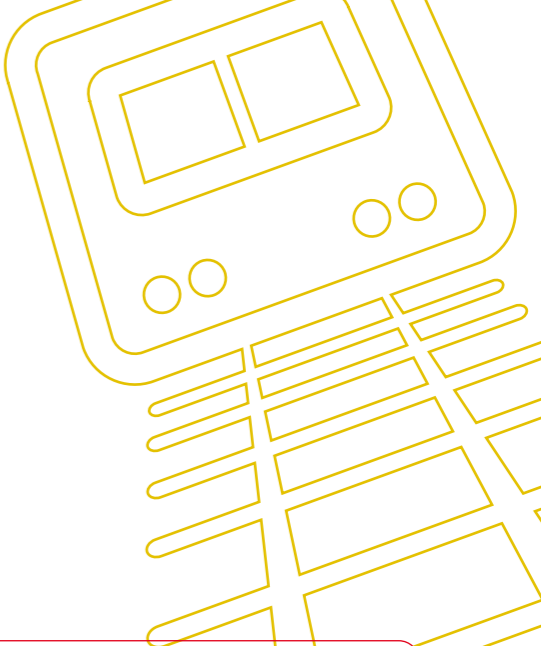
V/Line

V/Line is Victoria's largest regional train and coach provider that can take you to major regional areas throughout the state. The following pages outline the services closest to you.

To plan your trip, use the online journey planner at **viclink.com.au** or call **136 196**.



All information is correct at time of printing, July 2009.



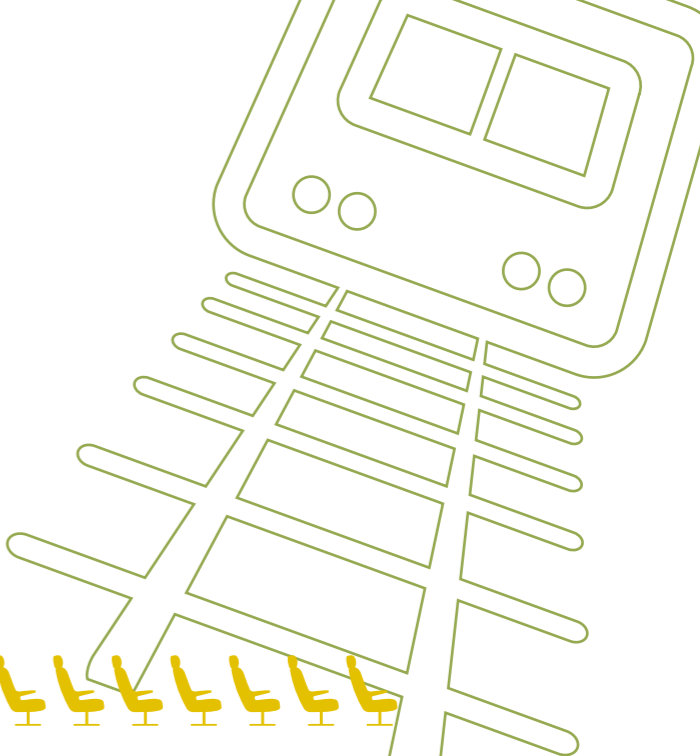


V/Line coaches and trains

V/Line coaches run from Horsham to Ararat and Ballarat stations and connect with trains to Melbourne. The V/Line coach stop in Horsham is located at the old police station on Roberts Avenue.

V/Line offers a variety of flexible ticket options. Visit vline.com.au for details on which ticket type best suits you. You can buy your V/Line ticket from V/Line agents in the area. Please call **136 196** to find out where your closest agent is located. You can also buy your V/Line ticket over the phone by calling **136 196**.

All information is correct at time of printing, July 2009.





Fares

For information on V/Line fares visit vline.com.au or call

FARES

136 196

6am – 10pm daily

Fares

Depending on where you're headed and what kind of transport you're using, the type of fare and cost will vary. If you're planning a trip, visit viclink.com.au to find out which services you need to catch.

What fares are available?

Your local bus service offers full fares and concession fares for those who hold the appropriate concession cards. For a full list of accepted concession cards visit viclink.com.au or call **136 196**.

V/Line offers a variety of flexible ticket options, including Day Return, Off Peak Day Return, Weekly, Monthly, and Date to Date tickets, as well as Single and Off Peak Single. There are also concession tickets and low cost tickets for passengers aged 16 years and under.

All information is correct at time of printing, July 2009.

What's more, most V/Line tickets also include travel on Melbourne's trains, trams and buses! If you are travelling to Geelong, Ballarat, Bendigo, Morwell, Moe or Traralgon, you can travel on their local bus networks with the same ticket. Visit vline.com.au for more information.

Where do I buy tickets?

Local buses

You can buy tickets on board buses. For more information, call Nortons Coaches on **(08) 8762 2962**.

V/Line coaches and trains

You can buy V/Line tickets from V/Line agents in the area, or by calling **136 196**. Visa and MasterCard are accepted. Please allow seven days for delivery. V/Line coach tickets can be collected on board.



Community transport

For more information call
Wimmera Transport Connections

5382 5607
9am – 5pm Mon – Fri



Community transport

Community transport is now available to people with special needs. To find out if you are eligible call Wimmera Transport Connections on **5382 5607** 9am – 5pm Mon – Fri.



All information is correct at time of printing, July 2009.

