



## Where to find out more

For information on tickets, services, timetables and route maps, or to request large print timetables, visit [viclink.com.au](http://viclink.com.au) or call **136 196**, 6am – 10pm, daily.

**We welcome your feedback.**  
Visit [viclink.com.au](http://viclink.com.au) or call **136 196**.



## Kaniva region

## Your guide to public transport

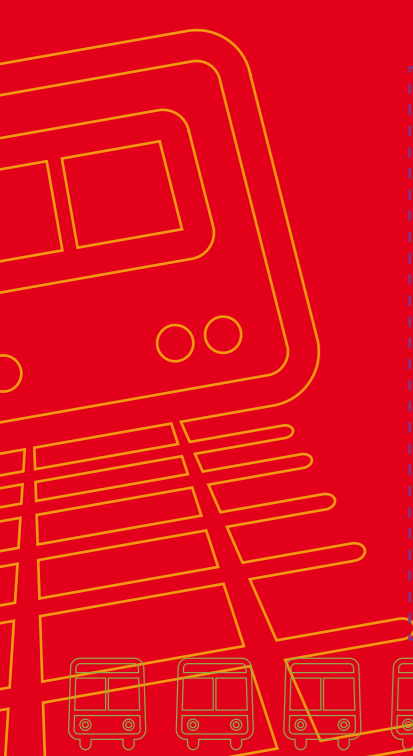


MET1691\_07/09



Viclink: Victoria's public transport operators working together.





### Public transport information

To plan your trip from start to finish within Victoria, use the online journey planner at **viclink.com.au**

**136 196** 6am – 10pm daily

**9619 2727** TTY

### Local buses

Call Wimmera Roadways  
Or visit **viclink.com.au**

**5381 1548** 9am – 5pm Mon – Fri

### V/Line trains and coaches

Call V/Line or visit **vline.com.au**

**136 196** 6am – 10pm daily

### Community transport

Wimmera Transport Connections

**5382 5607** 9am – 5pm Mon – Fri

QUICK REFERENCE

## Local buses

For local bus information call  
Wimmera Roadways

**5381 1548**  
9am – 5pm Mon – Fri

THIS WAY →

## Local buses

### What services are available?

Wimmera Roadways run a service between Horsham and Kaniva on Wednesdays.

### Where can I catch them?

The following page includes a map of the intertown service between Kaniva and Horsham operated by Wimmera Roadways on Wednesdays.

### When do they run?

The following page includes a timetable for the Kaniva to Horsham service. Timetable information is available from [viclink.com.au](http://viclink.com.au) or call **136 196**. For printed timetables call Wimmera Roadways on **5381 1548** 9am – 5pm Mon – Fri.

### What are the fares?

You can buy tickets on board buses. For more information, call Wimmera Roadways on **5381 1548** 9am – 5pm Mon – Fri.

### Other services

For information on coach services between Melbourne and Adelaide, stopping in Kaniva contact:

- Firefly Express Coaches on **1300 730 740** or visit [www.fireflyexpress.com.au](http://www.fireflyexpress.com.au)
- Greyhound on **1300 473 946** or visit [www.greyhound.com.au](http://www.greyhound.com.au)



# Kaniva to Horsham



100609



For public transport information  
call **136 196 (TTY) 9619 2727**  
or visit [viclink.com.au](http://viclink.com.au)  
MAP NOT TO SCALE

Kaniva to Horsham	
	Wednesday AM
Mobile roadhouse (Kaniva)	7.30
Information centre (Nhill)	8.00
Car park rear toilet block (Dimboola)	8.35
Fisher St (Pimpinio)	8.50
Roberts Av (Horsham)	9.07

Horsham to Kaniva	
	Wednesday PM
Roberts Av (Horsham)	4.10
Fisher St (Pimpinio)	4.27
Car park rear toilet block (Dimboola)	4.42
Information centre (Nhill)	5.17
Mobile roadhouse (Kaniva)	5.42

This bus service is operated by Wimmera Roadways 5381 1548.  
All information is correct at time of printing, July 2009.

# LOCAL INTERTOWN BUSES



# V/Line

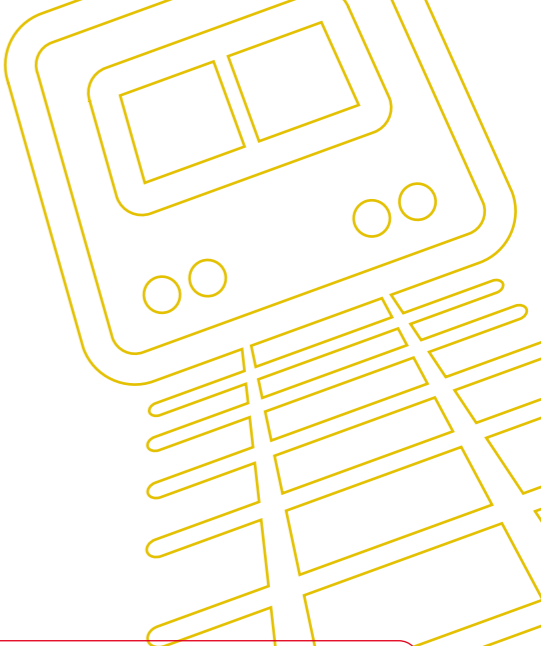
V/Line is Victoria's largest regional train and coach provider that can take you to major regional areas throughout the state. The following pages outline the services closest to you.

To plan your trip, use the online journey planner at [viclink.com.au](http://viclink.com.au) or call **136 196**.

**For full details on your local V/Line service, please see the timetable included at the front of this booklet.**



All information is correct at time of printing, July 2009.



## V/Line coaches

There are a number of coach services for travel to destinations across Victoria. To plan your trip, use the online journey planner at [viclink.com.au](http://viclink.com.au) or call **136 196**.

### What coach services are available?

V/Line runs a daylink coach service between Bendigo and Adelaide which stops at Kaniva, Lillimur and Bordertown. This coach service ends at Dimboola and connects with a coach to Ballarat.

### Where can I catch them?

The V/Line coach stop in Kaniva is located at the Kaniva Community Roadhouse. Timetables are available from [vline.com.au](http://vline.com.au) or by calling **136 196**.

### When do they run?

For V/Line coach service timetables, visit [vline.com.au](http://vline.com.au) or call **136 196**.

### What are the fares?

V/Line offers a variety of flexible ticket options. Visit [vline.com.au](http://vline.com.au) for details on which ticket type best suits you. You can buy your V/Line ticket from V/Line agents in the area. Please call **136 196** to find out where your closest agent is located. You can also buy your V/Line ticket over the phone by calling **136 196**.



## V/Line trains

The V/Line coach service that runs from Dimboola to Ballarat connects with trains to Melbourne and Ararat. Visit [vline.com.au](http://vline.com.au) or call **136 196** for full timetable details.





## Fares

For information on V/Line fares visit [vline.com.au](http://vline.com.au) or call

# FARES

**136 196**  
6am – 10pm daily

## Fares

Depending on where you're headed and what kind of transport you're using, the type of fare and cost will vary. If you're planning a trip, visit [viclink.com.au](http://viclink.com.au) to find out which services you need to catch.

### What fares are available?

Your local bus service offers full fares and concession fares for those who hold the appropriate concession cards. For a full list of accepted concession cards visit [viclink.com.au](http://viclink.com.au) or call **136 196**.

V/Line offer a variety of flexible ticket options, including Day Return, Off Peak Day Return, Weekly, Monthly, and Date to Date tickets, as well as Single and Off Peak Single. There are also concession tickets and low cost tickets for passengers aged 16 years and under.

All information is correct at time of printing, July 2009.

What's more, most V/Line tickets also include travel on Melbourne's trains, trams and buses! If you are travelling to Geelong, Ballarat, Bendigo, Morwell, Moe or Traralgon, you can travel on their local bus networks with the same ticket. Visit [vline.com.au](http://vline.com.au) for more information.

### Where do I buy tickets?

#### Local buses

You can buy tickets on board buses. For more information, call Wimmera Roadways on **5381 1548** 9am – 5pm Mon – Fri.

#### V/Line coaches and trains

You can buy V/Line tickets from V/Line agents in the area, or by calling **136 196**. Visa and MasterCard are accepted. Please allow seven days for delivery. V/Line coach tickets can be collected on board.



# Community transport

For more information call  
Wimmera Transport Connections

**5382 5607**  
9am – 5pm Mon – Fri



# Community transport

Community transport is now available to people with special needs. To find out if you are eligible call Wimmera Transport Connections on **5382 5607** 9am – 5pm Mon – Fri.



All information is correct at time of printing, July 2009.

